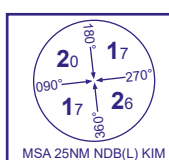
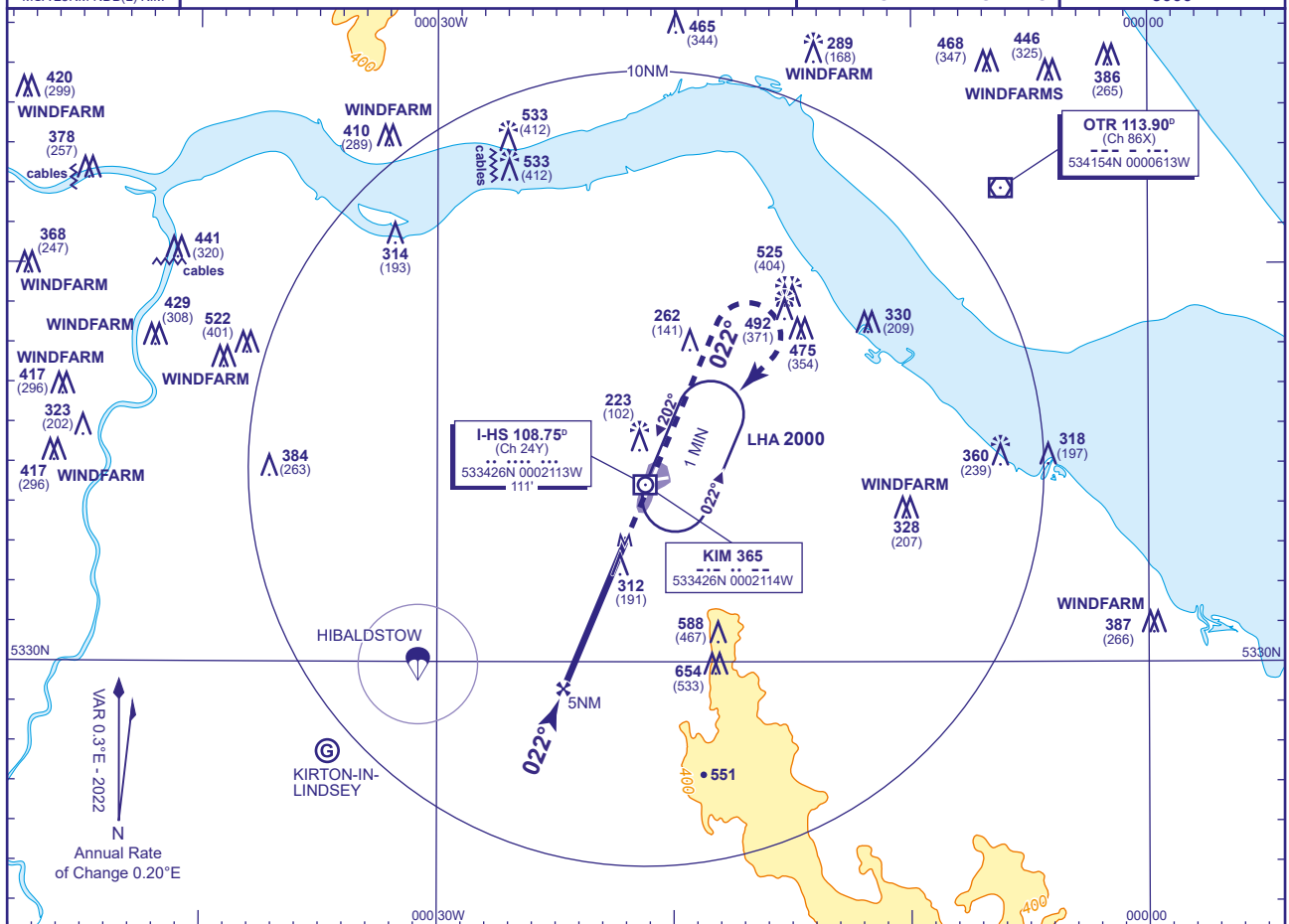


HUMBERSIDE
SRA RTR 1NM /
2NM
RWY 02
(ACFT CAT A,B,C,D)



APP	119.130	HUMBERSIDE APPROACH	AD ELEVATION	121
TWR	124.905, 119.130	HUMBERSIDE TOWER	THR ELEVATION	121
RAD	119.130, 129.255	HUMBERSIDE RADAR	OBSTACLE ELEVATION	
ATIS	124.130	HUMBERSIDE INFORMATION	654 AMSL (533) (ABOVE THR)	
			BEARINGS ARE MAGNETIC	

TRANSITION ALTITUDE
3000

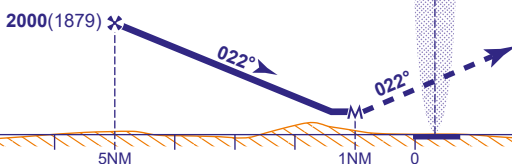


RADAR ADVISORY HEIGHTS Gradient 6.2%, 380FT/NM

NM	5.0	4.5	4	3.5	3	2.5	2	1.5
ALT(HGT)	2000(1879)	1810(1689)	1620(1499)	1440(1319)	1250(1129)	1060(939)	870(749)	680(559)

NDB(L) KIM

Arrival and immediate Approach as directed by radar.



MAPt 1 (M) RTR 1NM RTR 1NM
MAPt 2 (M) RTR 2NM 1NM after RTR
Climb straight ahead to 1700 or I-HS DME 2 outbound whichever is later, then climbing turn right to return to NDB(L) KIM to hold at 2000 or as directed.

Aircraft Category		A	B	C	D	Rate of descent	G/S KT	160	140	120	100	80
OCA (OCH)	SRA RTR 1NM	640(519)	640(519)	640(519)	640(519)		FT/MIN	1000	880	750	630	500
	SRA RTR 2NM	640(519)	640(519)	640(519)	640(519)	RTR 2NM to MAP2	MIN:SEC	0:22	0:26	0:30	0:36	0:45
VM(C)OCA (OCH AAL)	Total Area	690(569)	690(569)	990(869)	1050(929)							

CHANGE (7/24): DME I-HS ELEVATION.